

BMW Z4



[www.bmw.com](http://www.bmw.com)

Sheer  
Driving Pleasure



# THE BMW Z4.

**BMW EFFICIENT DYNAMICS.**  
LESS EMISSIONS. MORE DRIVING PLEASURE.

International version. Please contact your local dealer for country specific information.

# THE URGE TO MOVE.

**PASSION:** it's what makes life worth living. Without it, an automobile like the BMW Z4 could not exist. As a true roadster, it embodies this unique feeling in each detail and line of its body. If you want to express your personal passion even more clearly, you can choose the Design Pure Traction equipment package. This transforms the classic sporting personality of the BMW Z4 into an athletic character that adds a very special quality to the car's typical roadster feeling: individuality.





## The BMW Z4

### MADE TO INSPIRE.

- 06 Design**  
Sharpened gaze, accelerated pulse.
- 14 Driving dynamics**  
More excitement with every breath.
- 16 Interior**  
A feast for all the senses.
- 22 Design Pure Traction**  
The thrill of attraction.

## Technology

### DEVELOPED FROM EMOTIONS.

- 32 BMW ConnectedDrive**  
So connected, you're free.
- 36 BMW EfficientDynamics**  
The technology package for reduced fuel consumption and emissions.
- 38 BMW TwinPower Turbo engines**  
Maximum performance combined with minimum fuel consumption.
- 40 Chassis and safety**  
Innovative systems for enhanced driving enjoyment.

## Equipment

### AS INDIVIDUAL AS YOUR DREAMS.

- 44 BMW Z4 sDrive35is**
- 46 Design Pure Traction**
- 48 M Sport package**
- 50 Design Pure Fusion**
- 52 Colours, upholstery and interior trims**
- 56 Standard/optional equipment**
- 62 BMW Individual hardtop in contrasting colour**
- 63 Original BMW Accessories**

## Overviews

### A SUMMARY OF THE BMW Z4.

- 64 Technical data and information on fuel consumption and CO<sub>2</sub> emissions**
- 66 BMW Service**  
BMW Service, BMW Financial Services and the BMW experience.

#### Editorial

# LET YOUR HEART RULE YOUR HEAD.

While we use our heads to make important judgement calls, the most beautiful decisions are made by our hearts. Choosing the BMW Z4 is an excellent example. The efficiency of its engines is a convincing rational argument – but one look at its irresistible lines is enough to awaken roadster love in the heart of the observer.

So join us for a day of spirited driving on Italy's twisting roads to find out which version of the BMW Z4 makes your heart beat faster. Whether it's as a classic roadster in elegant Mineral Grey metallic or as an extravagant athlete with the Design Pure Traction package – the BMW Z4 embodies the excitement of aesthetics and dynamism in more uncompromising style than ever before. Because when it comes to real driving pleasure, there's one emotion that comes first: passion.

[www.bmw.com/Z4](http://www.bmw.com/Z4)

#### Equipment of model shown: BMW Z4 sDrive35is with Design Pure Traction.

Engine: BMW TwinPower Turbo six-cylinder in-line petrol engine  
 Max. output: 250kW (340hp)  
 Wheels: 19" M Double-spoke style 326 M with mixed tyres  
 Exterior colour: Valencia Orange metallic  
 Upholstery: Alcantara/leather combination Black/Orange  
 Interior trim: Metal Weave

#### Equipment of model shown: BMW Z4 sDrive28i.

Engine: BMW TwinPower Turbo four-cylinder petrol engine  
 Max. output: 180kW (245hp)  
 Wheels: 18" light alloy wheels V-spoke style 515 with mixed tyres  
 Exterior colour: Mineral Grey metallic  
 Upholstery: Kansas leather/Walnut, extended  
 Interior trim: Fine-wood trim "FineLine" Anthracite



## SHARPENED GAZE, ACCELERATED PULSE.

**DECISIVENESS:** is what makes things move – and it's easy to see that the BMW Z4 has it in spades. The headlights with their corona rings and LED accent lights immediately make your heart beat faster. They lend the front its distinctive appeal and make it absolutely clear that this vehicle was built to excite. Only BMW knows how to build roadsters like this.

## IMPRESSIVELY EXPRESSIVE.

**FASCINATION:** can be expressed in many ways – the contemporary design language of the BMW Z4 is just one of them. It reflects the harmonious interplay of sportiness and elegance. From the upright kidney grille to the dynamic side creases with the integrated Z4-specific indicators to the powerful rear wheel arches – every shape contributes to the car's imposing overall appearance. In addition, the seat position just in front of the rear axle is ideal for perfect road feedback. All of this explains why the BMW Z4 leaves such a positive impression on drivers – and all those who turn their heads to get a second look before it is out of sight.








## FOR THE LOVE OF TARMAC.

**TRUST:** is the basic prerequisite for a close relationship with the road – and the true roadster spirit. With the BMW Z4, BMW engineers have demonstrated once more how to become one with the road. The aluminium front suspension makes a key contribution here – it reduces front axle weight in aid of an ideal 50/50 weight distribution, ensuring precise and agile handling all the way up to the car's limits.

But when it comes to exploring the physical limits of driving, the handling of the BMW HP4 motorcycle is no less impressive. As in the BMW Z4, top-quality materials and innovative technology such as Dynamic Damper Control (DDC) and Dynamic Traction Control (DTC) as well as Race ABS ensure maximum traction and safety. Despite its enormous power, the 193hp BMW HP4 delivers outstanding control combined with exceptional agility and dynamic behaviour on both road and track.

In a BMW, it makes no difference whether two or four wheels touch the tarmac – they're always doing it for love.



**MORE  
EXCITEMENT  
WITH EVERY  
BREATH.**

**VERVE:** is something that comes naturally in the BMW Z4. Its aluminium front axle saves a significant amount of weight, ensuring a balanced front-rear weight distribution. The BMW TwinPower Turbo four-cylinder petrol engine in the BMW Z4 sDrive28i puts this advantage to good use. In concert with the optional eight-speed Steptronic transmission it creates a peerless and breathtaking driving experience: the engine's 180kW (245hp)<sup>1</sup> of power deliver an immediate punch as soon as you put your foot to the pedal, accelerating the car from 0 to 100km/h in just 5.5 seconds. It's one time your head and your heart will be in happy agreement: because at just 6.8 litres per 100 kilometres, the car's fuel efficiency is equally impressive.

<sup>1</sup> For information on fuel consumption and CO<sub>2</sub> emissions please see p. 64.





## A FEAST FOR ALL THE SENSES.

**EXUBERANCE:** comes naturally in the BMW Z4 – all you need to do is get in. It doesn't matter how fast you want to go, the optional sport seats for the driver and passenger (standard for the Z4 sDrive35is) offer outstanding lateral support for spirited driving. SunReflective Technology ensures that the leather upholstery heats up very little even in direct sunshine, enabling you to enjoy open-top driving to the full. Beautiful craftsmanship and premium materials like fine wood and high-gloss trim elements create an exclusive ambience in the interior – making every drive in the BMW Z4 a journey of discovery for all the senses.



## ADDICTED TO FREEDOM.

**INDEPENDENCE:** means freedom. In the BMW Z4, it also means a plethora of innovative functions. BMW ConnectedDrive services, apps and driver assist systems provide optimal convenience, entertainment and safety. Apps enable you for example to keep in touch with everyone via Facebook or Twitter and share your most beautiful moments with your friends. The free AUPEO! personal internet radio app meanwhile ensures that each drive will be accompanied by your own personal soundtrack. Freedom of choice is at the heart of this service: you pick your own musical preferences from a library of 120 genres and around 1 million songs. The result is that the BMW Z4 makes it even easier to escape the daily routine – without having to compromise on comfort.





## THE THRILL OF ATTRACTION.

**DESIRE:** is awakened as something casts a spell over us. One place that has this power of attraction is the cockpit of the BMW Z4, enhanced by the Design Pure Traction package. It combines spirited design with perfect ergonomics. The asymmetrical centre console faces the driver, as does the instrument panel, whose round controls hark back to the legendary BMW Z8. Features unique to Design Pure Traction include the premium Alcantara/leather combination and decorative stitching in distinctive Orange, which make for a strikingly sporty ambience – and provide an unforgettable caress to the fingertips with every touch.



## ADRENALINE LEVEL – NO UPPER LIMIT.

**EUPHORIA:** is like a spark that sets our feelings alight. One look at the optional Valencia Orange metallic paint finish, combined with the BMW Individual hardtop in contrasting non-metallic Black, immediately makes the adrenaline level rise. It emphasises the distinctive sporty character of the BMW Z4, turning it into an even more consummate athlete. This impression remains unchanged even with the roof up, because the aluminium hardtop's lines harmonise perfectly with the design of the body, just like the top does not compromise the roadster's typically slim rear when retracted. One press of a button is enough to start the fully automatic

closing process, which takes around 19 seconds to complete and can be initiated at speeds of up to 40km/h. Opening the roof again takes 22 seconds. Whether the hardtop is up or down isn't a question of style, but simply a response to the needs of the moment.

# THE EXTRAVAGANCE OF INNER STRENGTH.

**POWER:** implies having the confidence to master any challenge. The BMW Z4 makes an extravagant statement in any situation – providing a first indication of its superiority. The optional Adaptive M suspension enables it to transmit its full power to the road, taking dynamic ability to a new level without ever compromising comfort. For a lower centre of gravity and higher cornering speeds, ride height is lowered by ten millimetres. Sensors capture all relevant acceleration data and perform automatic adjustments of damping parameters within hundredths of a second. And with Driving Experience Control, you can always make sure that the strengths of the BMW Z4 are deployed to maximum effect.





## OVERPOWERS THE MIND. UNLEASHES THE HEART.

**ECSTASY:** proves that passion can always be taken to another level. The BMW TwinPower Turbo six-cylinder in-line petrol engine in the BMW Z4 sDrive35is proves it, too: up to 450Nm of torque – with a short-term 500Nm peak torque thanks to an overboost function – and 250kW (340hp)<sup>1</sup> of power catapult the roadster from 0 to 100km/h in just 4.8 seconds. As it does so, you'll find your heartbeat accelerating at the same rate. Every gear change is executed within fractions of a second by its standard

seven-speed Steptronic sport transmission with double clutch, with almost no gaps in power delivery – unleashing pure intensity. And instantly making one thing clear: that your heart is in charge here.

<sup>1</sup> For information on fuel consumption and CO<sub>2</sub> emissions please see p. 64.





## BMW ConnectedDrive So connected, you're free.



Our world is becoming more closely connected every day. BMW drivers are used to the fact that their vehicle and their world are connected – that they can request information, communicate via telephone or email and always be up to date while they're on the go. The BMW ConnectedDrive concept encompasses all the services and innovative technologies that network BMW vehicles and their passengers with the world outside and the traffic around.



**BMW ConnectedDrive**, with its intelligent services and assistance systems, is ready with all the right equipment. BMW ConnectedDrive Services & Apps offer more freedom by providing versatile connections between the driver, vehicle and outside world. BMW ConnectedDrive Driver Assistance systems make driving a BMW safer and more comfortable. And intelligent systems make life easy for the driver and minimise the dangers of traffic.

For more information see:

➔ [www.bmw.com/ConnectedDrive](http://www.bmw.com/ConnectedDrive)

## CONNECTED DRIVE SERVICES.

Our everyday lives are becoming more and more connected. BMW drivers, however, enjoy better connections than most. They can source information, communicate by telephone and email, keep an eye on the traffic and generally stay up to date while on the move. The services that so effectively network BMW vehicles with the outside world are grouped under one term – BMW ConnectedDrive<sup>1</sup>.



The **ConnectedDrive Services\*** option seamlessly connects you to everything that's important to you, and to the people you want to be close to. Every feature has been designed to enhance your driving experience. The ConnectedDrive Services offer a comprehensive selection of services and apps – such as Facebook, web radio and message dictation. In this way, it is always up to you to decide which of the many and varied services you want to use.

\* May not be available in all countries, please consult your BMW partner.

<sup>1</sup> For further information on BMW ConnectedDrive please visit <http://www.bmw.com/connecteddrive>

The images shown here are equipment examples. Features are individually specific to every BMW. Depending on the model, the Control Display and presentation of content may differ.

## BMW CONNECTED DRIVE SERVICES & APPS – INTELLIGENT CONNECTIVITY.

The **BMW ConnectedDrive Services & Apps\*** – configuring them according to your individual needs is now quicker and easier than ever before. Listening to your favourite kind of music on every journey? No problem with AUPEO! personal internet radio.



### AUPEO! PERSONAL INTERNET RADIO – CREATE YOUR OWN RADIO PROGRAMME.

With a compatible smartphone and the AUPEO! personal internet radio app, the driver can enjoy access to over 120 music genres and currently more than a million songs inside the car. The radio can be personalised to suit any musical taste with the "Love" and "Ban" buttons. This option is only available in conjunction with BMW ConnectedDrive Services.



### INTERNET – INFORMATION AT YOUR FINGERTIPS.

Whether you need to check the balance in your bank account, place a bid on eBay or look something up in Wikipedia, the BMW ConnectedDrive Internet option ensures that you can do whatever you need to do online. To enable you to surf to your heart's content, the iDrive Controller in the centre console doubles as a computer mouse.



### BLUETOOTH OFFICE – ALWAYS IN TOUCH.

Bluetooth Office enables BMW office functions such as emails, appointments, tasks, contacts and text messages to be shown on the Control Display or read aloud over the audio speakers using the read-aloud function. All compatible mobile end devices are listed at [www.bmw.com/bluetooth](http://www.bmw.com/bluetooth).

## BMW CONNECTED DRIVE DRIVER ASSISTANCE – A CO-DRIVER WHO THINKS AHEAD.

**BMW ConnectedDrive Driver Assistance** includes innovative functions that enhance safety and convenience, maximising your driving pleasure. Inch-perfect parking? Park Distance Control (PDC) helps you do it.



### RAIN SENSOR – CLOUDY SKIES, UNCLOUDED VISION.

Rain sensor with automatic driving lights control: automatically switches on the windscreen wipers when it begins to rain, adjusting the wiper frequency in line with rainfall intensity. The integrated automatic driving lights control will switch on the low beam automatically in the rain, at dusk and in tunnels.



### PARK DISTANCE CONTROL (PDC) – IN A TIGHT SPOT? NO PROBLEM.

Parking and manoeuvring in confined spaces made easy. The Park Distance Control at the front and rear takes ultrasound measurements of the distance to any obstacles, gives you an acoustic warning and shows the distance between them and your car on the Control Display, depending on the equipment installed.

\* May not be available in all countries. Please consult your BMW partner.  
The images shown here are equipment examples. Features are individually specific to every BMW. Depending on the model, the Control Display and presentation of content may differ.

BMW EFFICIENTDYNAMICS.  
LESS EMISSIONS. MORE DRIVING PLEASURE.



## BMW EFFICIENT DYNAMICS – MAKING A LITTLE GO A LONG WAY.

For BMW, the focus is always on delivering quintessential BMW driving pleasure. The pioneering BMW EfficientDynamics strategy, used across the entire model range, supports this goal using innovative technologies that minimise the vehicles' fuel consumption and emissions while at the same time enhancing dynamic performance and driving enjoyment.

It's a comprehensive technology package that encompasses the engine, energy management and the vehicle concept – and is standard in every BMW.

The new generation of petrol and diesel engines in the BMW TwinPower Turbo family is responsible for the improved performance and the reduction in emissions. Optimised aerodynamics and BMW EfficientLightweight contribute to increased efficiency. The BMW intelligent lightweight construction concept is all about using the right material in the right place, in order to lower weight, increase rigidity and thus achieve maximum agility.

BMW is leading the charge in terms of innovation in this area and is the only major car manufacturer that uses ultralight and highly rigid carbon fibre (CFRP). BMW also focuses on forward-thinking drive train concepts such as the BMW eDrive technology with a 100% electric powerplant, as well as plug-in hybrid models.

Overall, the technology package encompasses a multitude of optimisation measures in every BMW. Other features such as the ECO PRO mode, the Automatic Start/Stop function, the optional eight-speed Steptronic transmission and Brake Energy Regeneration also contribute to reductions in fuel consumption and emissions, as well as enhanced performance and driving pleasure. Included as standard in every BMW.

## THE BMW EFFICIENT DYNAMICS MEASURES IN THE BMW Z4 AT A GLANCE.

**Automatic Start/Stop function.** The BMW Z4 sDrive18i, BMW Z4 sDrive20i and BMW Z4 sDrive28i with six-speed manual gearbox come with the Automatic Start/Stop function. During brief stops, for example at red light, this function automatically switches off the engine to save fuel. A "Start/Stop" symbol in the Info Display indicates that the function is active.

**Electric Power Steering.** Unlike conventional, hydraulic steering systems, electric power steering only draws power during actual steering movements. As long as the steering wheel position remains constant – for example when driving at speed along the motorway – the electric motor is inactive.

**BMW TwinPower Turbo technology.** BMW TwinPower Turbo combines advanced injection technologies and fully variable power control for superior efficiency with innovative turbocharger technology to enhance dynamic performance.

**BMW EfficientLightweight.** Where it makes sense to use lightweight materials, our engineers use aluminium – for example in the front section and suspension, as well as for the bonnet and hardtop. The engines too are made of aluminium, making them the lightest in their class. These weight savings lower fuel consumption and improve weight distribution – for enhanced agility, especially in corners.

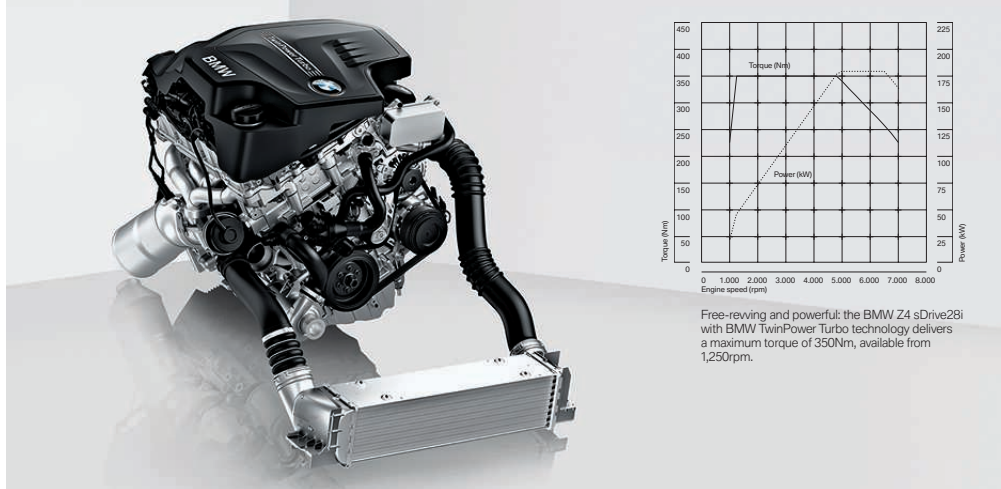
**Optimum Shift Indicator.** Shifting gears at the right time is one of the easiest and most effective ways to save fuel. The Optimum Shift Indicator shows the driver which gear to change to in order to save fuel.

**Brake Energy Regeneration.** To supply the battery with electrical energy, the alternator is driven by the engine, which imposes a constant overhead on the car's fuel consumption. Brake Energy Regeneration means that the alternator generates electricity mainly when the driver takes his foot off the accelerator or brakes – making productive use of excess kinetic energy to feed the battery. In this way, electricity is generated while coasting, without consuming fuel.

**Tyres with reduced rolling resistance.** When a car is moving, its tyres constantly change shape. This uses up energy and thus fuel. Tyres with reduced rolling resistance minimise these changes in shape by means of an optimised design and the use of special materials in the tyre's tread and sides.

# ENGINES WITH THE RIGHT VALUES. FOR ACCELERATION FOR EXAMPLE.

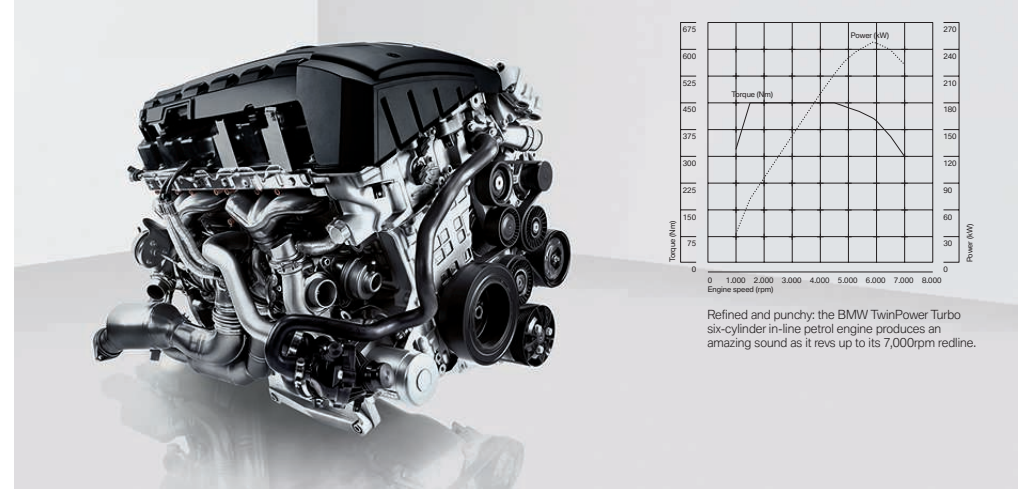
**The engines.** Power, responsiveness and revving ability characterise every BMW engine. Naturally, all the engines available for the BMW Z4 follow the BMW EfficientDynamics philosophy, aiming to combine performance with maximum efficiency, minimising both fuel consumption and CO<sub>2</sub> emissions. In addition, all engines offered for the BMW Z4 comply with the EU6 emissions standard. Whichever of the innovative BMW TwinPower Turbo engines you choose, you can be certain that you will enjoy maximum driving pleasure combined with superb efficiency.



**BMW Z4 sDrive18i.** The BMW TwinPower Turbo four-cylinder petrol engine delivers a maximum output of 115kW (156hp)<sup>1</sup> along with a maximum torque of 240Nm – and even up to 270Nm short-term peak torque thanks to an overboost function – and combines a TwinScroll turbocharger with Valvetronic, Double-VANOS and High Precision Injection. Mated to the six-speed manual gearbox (eight-speed Steptronic sport transmission available as an option), it powers the BMW Z4 from 0 to 100km/h in 7.9 seconds, and up to a top speed of 221km/h.

**BMW Z4 sDrive20i.** The BMW TwinPower Turbo four-cylinder petrol engine with High Precision Injection, Valvetronic, Double-VANOS and a TwinScroll turbocharger combines powerful performance with outstanding efficiency. The two-litre engine delivers an output of 135kW (184hp)<sup>1</sup> and a maximum torque of 270Nm, enabling the BMW roadster to accelerate from 0 to 100km/h in 6.9 seconds, and to reach a top speed of 235km/h in conjunction with the six-speed manual transmission.

**BMW Z4 sDrive28i.** The 2.0-litre BMW TwinPower Turbo engine has an all-aluminium crankcase and offers its maximum torque of 350Nm from as little as 1,250rpm. This is thanks to its BMW TwinPower Turbo technology, combining High Precision Injection, Valvetronic, Double-VANOS and a TwinScroll turbocharger. With a power output of 180kW (245hp), the BMW accelerates quickly and effortlessly, aided by the fast response of its TwinScroll turbocharger, going from 0 to 100km/h in just 5.7 seconds (eight-speed Steptronic sport transmission: 5.5 seconds). An outstanding performer, it offers a top speed of 250km/h, while fuel consumption is a very efficient 6.8 litres per 100 kilometres.<sup>1</sup>



**BMW Z4 sDrive35i.** This model's BMW TwinPower Turbo six-cylinder in-line petrol engine has a capacity of three litres and combines two turbochargers with Double-VANOS and High Precision Injection to deliver a power output of 225kW (306hp). 400Nm of torque are available from just 1,300rpm. The engine's revving ability is immense, accelerating the BMW from 0 to 100km/h in just 5.2 seconds (seven-speed Steptronic sport transmission: 5.1 seconds), at up to 7,000rpm. Average fuel consumption is 9.4 litres per 100km<sup>1</sup>, with CO<sub>2</sub> emissions of 219g/km<sup>1</sup> (seven-speed Steptronic sport transmission: 9.1 litres, 211g/km<sup>1</sup> of CO<sub>2</sub>).

**BMW Z4 sDrive35is.** The most powerful BMW TwinPower Turbo six-cylinder in-line petrol engine combines two turbochargers with Double-VANOS and High Precision Injection. Based on its three-litre capacity, it delivers an impressive 250kW (340hp) of power, and a stupendous 450Nm of torque. Thanks to a boost function, short-term peak torque is even higher, at 500Nm. Mated to the standard seven-speed Steptronic sport transmission with double clutch, the six-cylinder in-line engine provides continuous power almost uninterrupted by gear changes, catapulting the BMW Z4 from 0 to 100 km/h in just 4.8 seconds – with an average fuel consumption of just 9.1 litres per 100km<sup>1</sup> and CO<sub>2</sub> emissions of 211g/km<sup>1</sup>.

<sup>1</sup> For information on fuel consumption and CO<sub>2</sub> emissions please see p. 64.

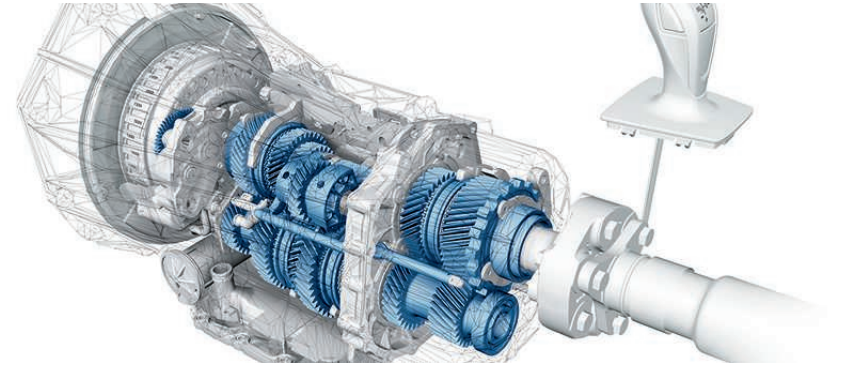


It's a quality that each and every BMW embodies: pure dynamic ability. The technical foundation of this exhilarating driving experience is the chassis. It ensures optimum road contact and ideal handling in every situation. It's the result of innovative, perfectly matched components and a 50/50 front-rear weight distribution. At the same time, BMW engineers continuously reinvent and refine the typical BMW driving dynamics. Every BMW chassis has the effect of transmitting a passion for sporty driving from the vehicle to the driver – while also offering maximum safety and comfort.



## THE IDEAL BASIS FOR DYNAMIC PERFORMANCE. AN EXCELLENT CHASSIS.

The BMW Z4 offers a whole host of innovative optional technologies to help you get the most out of each drive. Many of these systems are intelligently linked with each other. Their interaction ensures that you can enjoy maximum driving pleasure, in maximum safety – on every straight, in every corner, every second of your drive.



**The Adaptive M suspension** electronically adjusts the suspension to suit the road conditions and driving situation at all times. The driver can also adjust the suspension characteristics via the Driving Experience Control to enable their preferred driving style at the time – from comfortable to extremely athletic with markedly agile handling.

**Rear-wheel drive.** This is the basis of the hallmark BMW agility and manoeuvrability. At the same time, this drive configuration enables an ideal weight distribution across the entire chassis. This makes for perfect transmission of power and traction to the road.

**Steering.** Torque steer is completely alien to the BMW Z4. With rear-wheel drive, the drive wheels are not the ones steering the car, so the power applied to them can never affect the steering. The steering is evenly weighted and does not harden, and steering angles are small. The result is that you can literally feel cornering speed and road surface condition.

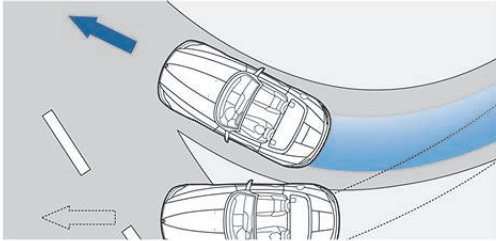
**Driving Experience Control.** This enables an individual adaptation of powertrain and chassis components, including the steering, by selecting either COMFORT, SPORT or SPORT+ mode. The SPORT+ mode enables very sporty driving all the way to the car's limits. For example by permitting more wheel slip on the rear wheels – something that you can allow at any time by pressing the "Traction" button.

**Eight-speed Steptronic sport transmission.** This optional, model-specific transmission adjusts to your style of driving – from comfortable cruising to a very dynamic experience indeed. To change gears, you can either use the shortened selector lever or the gearshift paddles on the sport leather steering wheel. In SPORT mode, maximum performance is guaranteed. The close spacing of the eight gears optimises acceleration, while also maximising efficiency and shift comfort.

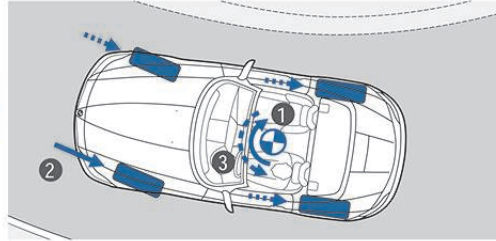
**Seven-speed Steptronic sport transmission with double clutch.** In this transmission (fitted as standard in the BMW Z4 sDrive35i, optionally available for the BMW Z4 sDrive35i) the various gears are assigned to two clutches. As one gear is disengaged, the next one is already engaged, for even faster gear changes that take just a few milliseconds – hardly more than the blink of an eye. With the uninterrupted power flow from the engine you can enjoy breathtaking acceleration combined with supreme ride comfort thanks to the almost imperceptible gear changes. In addition, the fast and precise selection of the most efficient gear significantly reduces fuel consumption in automatic mode.

# OPTIMUM SAFETY THANKS TO THE LATEST BMW TECHNOLOGIES.

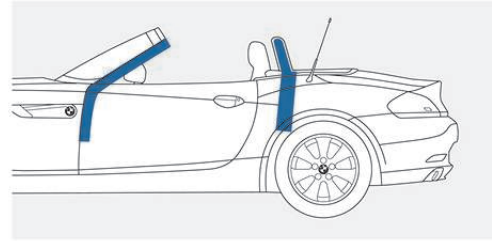
The BMW Z4 features advanced technologies on which you can always rely. Superior driving characteristics and innovative equipment come as standard in this car. As a driver, you will be supported by state-of-the-art technology able to give you maximum support in any situation, making you feel safe no matter what condition the roads are in.



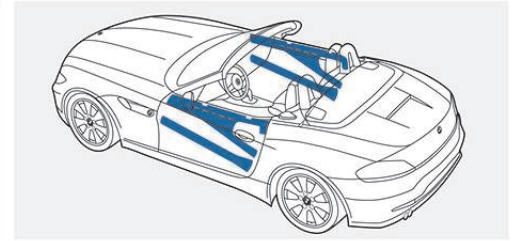
■ **Dynamic Stability Control (DSC)**, incl. CBC, braking assistant and additional functions. DSC recognises the risk of skidding from the start and stabilises the car within milliseconds. Traction Mode (DTC) permits increased wheel slip in order to maximise propulsion in specific situations and enable a sportier driving style. In DSC Off mode, an electronic locking differential improves handling.



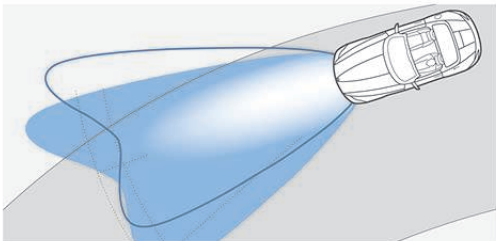
■ **Cornering Brake Control (CBC)** increases vehicle stability when braking gently in a fast bend. During braking manoeuvres, the load on the rear wheels is reduced, which can lead to oversteering (1). In brake manoeuvres that are outside the ABS control range, CBC addresses this tendency using asymmetric brake pressure control (2) in order to create a stabilising counterforce (3).



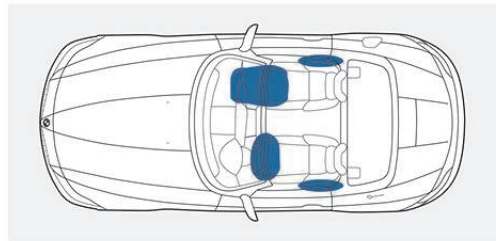
■ **Rollover protection system**, includes two steel roll bars behind the headrests, a very strong body crossmember as well as steel roll bars integrated in the A-pillars and windscreen header to protect the occupants.



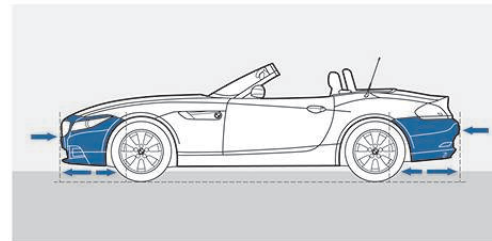
■ **Side impact protection** with reinforced crossmembers in the doors near the seat and backrest and a seat structure specially designed for safety in the event of an impact increase occupant protection.



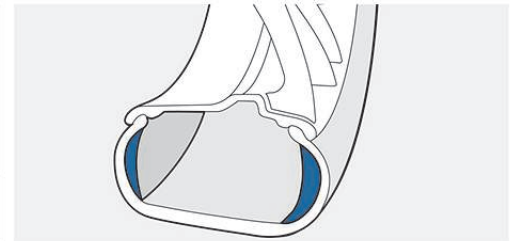
□ **Adaptive Headlights with variable light distribution** feature swivelling headlights to ensure optimised road illumination once the vehicle enters a bend. This enhances safety when driving at night or in bad visibility. Sensors register the steering angle, yaw rate and vehicle speed; the direction of the headlight beams is automatically adjusted to match the calculated layout of the bend.



■ **Driver airbag and passenger airbag** protect the head and upper body from hitting the steering wheel or instrument panel in a frontal collision. The passenger airbag includes seat occupancy detection. The side airbags (head/thorax) significantly reduce the risk of injuries to the head, pelvis and thorax in a lateral collision.



■ **Bumper system** with reversible aluminium impact absorbers; replaceable deformation elements at the front and rear absorb impact forces at speeds of up to 15km/h without damage to the car's body; energy-absorbing foam in the front bumper allows impacts at up to 4km/h to be absorbed without damage.



■ **Runflat tyres** feature reinforced side walls allowing them to maintain their shape and rim position even after loss of pressure. This means that you can safely reach the nearest garage.  
 ■ The **tyre pressure monitor** warns the driver of any loss of pressure, using sensors to assess the air pressure and temperature.

## BMW Z4 sDRIVE35is – DYNAMIC.

The BMW Z4 sDrive35is stands for uncompromising driving enjoyment. BMW TwinPower Turbo technology enables the BMW Z4 sDrive35is to deliver an impressive output of 250kW (340hp) and an equally ferocious torque of up to 450Nm – thanks to a boost function, short-term peak torque is even higher, at up to 500Nm. Mated to a seven-speed double-clutch Steptronic sport transmission as standard, the six-cylinder in-line engine can rev up to a 7,000rpm redline and takes just 4.8 seconds to accelerate the car from 0 to 100km/h, its power delivery almost uninterrupted by gear changes. Its average fuel consumption is a frugal 9.1 litres per 100km<sup>1</sup>, with CO<sub>2</sub> emissions of 211g/km<sup>1</sup>. The dynamic power that the BMW Z4 sDrive35is is able to unleash is apparent just from looking at it. The M Sport package included as standard and the 18" light alloy wheels Star-spoke style 295 with mixed tyres reflect this car's thoroughbred character. Its appearance is defined by the striking bonnet, short overhangs and low position of the seats close to the rear axle. An exclusively modified aerodynamics package in vehicle colour, consisting of a front apron with integrated matt aluminium slats, a rear apron with a black diffuser, and exterior mirrors with an Oxide Silver finish, completes the aesthetic and powerful appearance.

The Adaptive M suspension comes as standard and ensures superior road holding, with sport seats providing perfect lateral support. In the cockpit, a speedometer display with an exclusive grey design featuring an "sDrive35is" wordmark and an M footrest inspire top-class performance. The interior of your BMW Z4 sDrive35is radiates sporting appeal. Highlights include an Alcantara/leather combination in Black with contrasting Orange accents, Metal Weave interior trim (both only available in conjunction with Design Pure Traction), and surrounds for the Control Display and vents in high-gloss Black. The M leather steering wheel with multifunction buttons and paddles, M entry sills, foot mats with grey piping, and model designation, in combination with the BMW Individual roofliner in Anthracite, round off the attractive appeal of the cabin.



Black interior equipment – for an even more powerful, sporting ambience.



Energetic appearance.



The exterior paint finish in Black Sapphire metallic emphasises this car's athletic looks even more.

<sup>1</sup> For information on fuel consumption and CO<sub>2</sub> emissions please refer to page 64.

## DESIGN PURE TRACTION – SPIRITED.

The BMW Z4 embodies a passion for the road as well as undiluted joie de vivre. The Design Pure Traction package is one way of expressing this joy. It combines the Metal Weave interior trim with sport seats in a black Alcantara and leather combination which is enriched by contrasting orange details. The Alcantara door trim inserts and instrument panel bottom come in either orange or black to provide athletic accents. Extended Alcantara/leather trim is available as an option. The centre console surround and door handle inserts in Piano finish Black provide highlights which radiate a powerful energy. The optional exterior paint finish in Valencia Orange metallic combines with the contrasting black hardtop to emphasise the sporty character of this car. The Design Pure Traction package can optionally also be combined with various other exterior colours.



Alcantara/leather combination with orange accents.



Coloured accents for the door trims.



The BMW Z4 in the optional Valencia Orange metallic exterior colour.



Emphatically sporty interior.



## BMW Z4 M SPORT PACKAGE – ATTRACTIVE.

Independently of the engine model you select for your BMW Z4, you can emphasise the dynamic appearance of this timelessly beautiful roadster with the exclusive M Sport package. This will provide your vehicle with excellent aerodynamic qualities and even sportier looks, courtesy of the M Aerodynamics package with specially designed front and rear aprons and 18" M light alloy wheels Star-spoke style 325 M with mixed tyres. 19" M light alloy wheels Double-spoke style 326 M are available as an option. And the M Sport suspension included in this package ensures impressively agile handling, while the M leather steering wheel provides excellent grip. For an especially confident appearance, you can order your BMW Z4 in the optional Melbourne Red metallic exterior colour. Interior features for the M Sport package include sport seats for the driver and passenger, M entry sills, M footrest, a BMW Individual roofliner in Anthracite as well as the attractive Aluminium Carbon interior trim.



For exceptional grip – the M leather steering wheel.



A sporty reception – the entry sill with M logo.



The BMW Z4 with M Sport package in the optional Melbourne Red metallic exterior colour.



Rear apron with black diffuser.

## DESIGN PURE FUSION – EXCLUSIVE.

This equipment package provides an especially high-quality, harmoniously balanced combination of colours and materials. This includes the optional paint finish in Sparkling Brown metallic, which creates a warm, dark appearance. If you wish, you can of course combine the Design Pure Fusion package with other exterior colours. The interior of the BMW Z4 Design Pure Fusion in Ivory White provides an exquisite contrast, surrounding you with its velvety-soft, extended Exclusive Nappa leather trim. In addition, the top of the instrument panel and the upper-arm trim panels are covered in black leather, which, offset by brown stitching, creates an outstandingly sumptuous look. This is stylishly complemented by interior trims crafted from high-gloss Finition Brown wood. The instrument panel bottom features precisely matched Exclusive Nappa leather in Saddle Brown. The package also includes elegant sport seats. Covered in Exclusive Nappa leather in Ivory White with brown contrast stitching, they will attract admiring glances and provide superior support in every driving situation.



Automatic air conditioning controls offset by Finition Brown wood.



A sophisticated contrast: the centre console reflects the interplay of Exclusive Nappa leather in Ivory White and high-gloss Finition Brown wood.



Matched to aesthetic perfection: the colours and materials in the interior.



The Sparkling Brown metallic paint finish conveys a harmonious appeal.



The sporty and elegant interior provides optimal ergonomics for the driver.

Exterior colours.



■ Non-metallic 300 Alpine White



■ Non-metallic 668 Black<sup>1</sup>



□ Metallic 475 Black Sapphire



□ Metallic A76 Deep Sea Blue



□ Metallic B39 Mineral Grey



□ Metallic A75 Melbourne Red



□ Metallic B44 Valencia Orange



□ Metallic A83 Glacier Silver



□ Metallic B53 Sparkling Brown



□ Metallic A96 Mineral White



BMW Individual



□ BMW Individual roof colour 668 Black non-metallic



□ BMW Individual roof colour A83 Glacier Silver metallic

These pages show the colours and materials available for the BMW Z4. Use them to identify your favourite colours, or compare various combinations. These colour samples are meant to give you a first impression of paints and materials. Experience has shown, however, that printed versions of paint, upholstery, and interior trim colours cannot always faithfully reproduce the colour appearance of the originals. We recommend therefore that you consult your BMW dealer who will be happy to show you original samples and assist with special requests.

Upholstery colours.



■ Panama cloth ASAT Anthracite



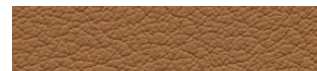
□ Kansas leather LYSW Black<sup>3,4,5</sup>



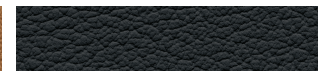
□ Kansas leather LYCY Canberra Beige<sup>3,4,5</sup>  
Instrument panel bottom in Canberra Beige



□ Kansas leather LYD1 Coral Red<sup>3,4,5</sup>  
Instrument panel bottom in Coral Red



□ Kansas leather LYSY Walnut<sup>3,4,5</sup>  
Instrument panel bottom in Walnut



□ Kansas leather, extended PASW Black<sup>4,6</sup>



□ Kansas leather, extended PACY Canberra Beige<sup>4,6</sup>  
Instrument panel bottom in Canberra Beige



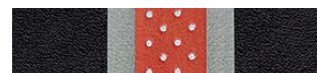
□ Kansas leather, extended PAD1 Coral Red<sup>4,6</sup>  
Instrument panel bottom in Coral Red



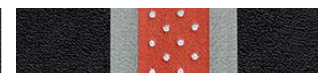
□ Kansas leather, extended PASY Walnut<sup>4,6</sup>  
Instrument panel bottom in Walnut



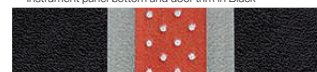
□ Nappa leather, extended, NAEW Ivory White<sup>4,7</sup>



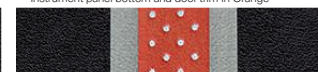
□ Alcantara/leather combination GMOE Black/Orange<sup>2,4</sup>  
Instrument panel bottom and door trim in Black



□ Alcantara/leather combination GMOF Black/Orange<sup>2,4</sup>  
Instrument panel bottom and door trim in Orange



□ Alcantara/leather combination, extended GUOE Black/Orange<sup>2,4,8</sup>  
Instrument panel bottom and door trim in Black



□ Alcantara/leather combination, extended GUOF Black/Orange<sup>2,4,8</sup>  
Instrument panel bottom and door trim in Orange

Please note that individual interior elements may differ from the interior colour, depending on the selected upholstery colour.

<sup>1</sup> Not available for Z4 sDrive35is and in combination with M Sport package.

<sup>2</sup> Only available in combination with Design Pure Traction or Design Pure Fusion in combination with the M Sport package.

<sup>3</sup> Standard for Z4 sDrive28i, Z4 sDrive35i, Z4 sDrive35is.

<sup>4</sup> Equipped with SunReflective Technology.

<sup>5</sup> Kansas leather includes seat surfaces, headrests, centre console armrest and door trim centre panel.

<sup>6</sup> Kansas leather, extended, and Exclusive Nappa leather, extended, include the same elements as Kansas leather plus instrument panel top, upper arm trim panels and sun visors in Black leather.

<sup>7</sup> Only available for Design Pure Fusion or Design Pure Fusion in combination with M Sport package.

<sup>8</sup> Alcantara/leather combination, extended, includes the same elements as Alcantara/leather combination plus instrument panel top, upper arm trim panels and sun visors in Nappa leather.

Interior colour.



Black with roofliner in Oyster.

Interior trims.



■ 4CG Satin Silver matt



□ 4AD Finely Brushed Aluminium<sup>1</sup>



□ 4MW Aluminium Carbon<sup>2</sup>



□ 4CE Fine-wood trim "Fineline" Anthracite



□ 4FE Metal Weave<sup>4</sup>



□ 4E0 Fine-wood trim "Fineline" Brown<sup>3</sup>

□ 7RY Design Pure Fusion

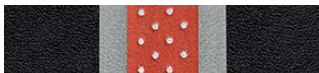
□ 7HY Design Pure Traction



□ Exterior colour: Metallic B53 Sparkling Brown



□ Exterior colour: Metallic B44 Valencia Orange



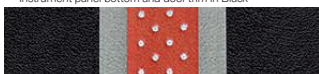
□ Upholstery colour: Alcantara/leather combination, extended GUOE Black/Orange<sup>4</sup>  
Instrument panel bottom and door trim in Black



□ Interior trim: 4E0 fine-wood trim "Fineline" Brown<sup>3</sup>



□ Interior trim: Metallic 4FE Metal Weave<sup>4</sup>



□ Upholstery colour: Alcantara/leather combination, extended GUOF Black/Orange<sup>4</sup>  
Instrument panel bottom and door trim in Orange



□ Upholstery colour: Nappa leather, extended NAEW Ivory White<sup>3</sup>



□ Upholstery colour: Alcantara/leather combination GMOE Black/Orange<sup>4</sup>  
Instrument panel bottom and door trim in Black



□ Upholstery colour: Alcantara/leather combination GMOF Black/Orange<sup>4</sup>  
Instrument panel bottom and door trim in Orange

# Combinations.

Interior colours	BMW upholstery colours													
	Panama cloth	Kansas leather				Kansas leather, extended				Nappa leather, extended <sup>3</sup>	Alcantara/leather combination <sup>4</sup>		Alcantara/leather combination, extended <sup>4</sup>	
Standard seats	•	•	•	•	•	•	•	•	•	—	—	—	—	—
Sport seats	—	•	•	•	•	•	•	•	•	•	•	•	•	•
Upholstery colour	Anthracite	Black	Canberra Beige	Coral Red	Walnut	Black	Canberra Beige	Coral Red	Walnut	Ivory White	Black/Orange	Black/Orange	Black/Orange	Black/Orange
Interior colour	Black	Black	Black	Black	Black	Black	Black	Black	Black	Black	Black	Black/Orange	Black	Black/Orange
BMW exterior colours	Alpine White non-metallic	•	•	•	•	•	•	•	•	•	•	•	•	•
Black <sup>4</sup> non-metallic	•	•	•	•	•	•	•	•	•	•	•	•	•	•
Black Sapphire metallic	•	•	•	•	•	•	•	•	•	•	•	•	•	•
Deep Sea Blue metallic	•	•	•	•	•	•	•	•	•	•	•	•	•	•
Mineral Grey metallic	•	•	•	•	•	•	•	•	•	•	•	•	•	•
Melbourne Red metallic	•	•	•	•	•	•	•	•	•	•	•	•	•	•
Valencia Orange metallic	•	•	•	•	•	•	•	•	•	•	•	•	•	•
Glacier Silver metallic	•	•	•	•	•	•	•	•	•	•	•	•	•	•
Sparkling Brown metallic	•	•	•	•	•	•	•	•	•	•	•	•	•	•
Mineral White metallic	•	•	•	•	•	•	•	•	•	•	•	•	•	•
BMW interior trim	4CG Satin Silver, matt	•	•	•	•	•	•	•	•	•	—	—	—	—
4AD Finely Brushed Aluminium <sup>1</sup>	•	•	•	•	•	•	•	•	•	•	—	—	—	—
4MW Aluminium Carbon <sup>2</sup>	—	•	•	•	•	•	•	•	•	•	—	—	—	—
4CE Fine-wood trim "Fineline" Anthracite	•	•	•	•	•	•	•	•	•	•	—	—	—	—
4FE Metal Weave <sup>4</sup>	—	—	—	—	—	—	—	—	—	—	•	•	•	•
4E0 Fine-wood trim "Fineline" Brown <sup>3</sup>	—	—	—	—	—	—	—	—	—	•	—	—	—	—

□ Standard equipment □ Optional equipment • Recommended colour combination — Not available

<sup>1</sup> Standard for Z4 sDrive35i. Not available in combination with Design Pure Fusion and Design Pure Traction.  
<sup>2</sup> Standard for Z4 sDrive35is. For the Z4 sDrive18i, Z4 sDrive20i, Z4 sDrive28i and Z4 sDrive35i models only in combination with M Sport package.  
<sup>3</sup> Only available for Design Pure Fusion or Design Pure Fusion in combination with M Sport package.  
<sup>4</sup> Only available for Design Pure Traction or Design Pure Traction in combination with M Sport package.  
<sup>5</sup> Not for Z4 sDrive35is and not in combination with M Sport package.

The models illustrated in this brochure show the specifications and configurations (standard and optional equipment) of vehicles produced by BMW AG for the German market. According to the specific requirements of other markets, alterations in standard and optional equipment and the configurations available for the different models, as described in this brochure, may occur. For more precise information about country-specific vehicle versions, please contact your local BMW partner. Subject to change in design and equipment.

Please note that even normal long or short-term use can lead to unrecoverable upholstery damage. This can be caused in particular by non-colourfast clothing.

## Standard / Optional equipment.



■ **Xenon Headlights for high and low beam**, with automatic headlight range control, headlight washing system, and LED accent lights. The LED light rings are used as daytime running lights.

□ **Adaptive Headlights** with variable light distribution for improved visibility in bends: the electromechanically controlled headlights are directed into the bend as soon as the vehicle starts cornering. The variable light distribution function available in conjunction with this option adjusts the width and reach of the light beams in line with road speed (only available in conjunction with rain sensor).



□ **Exterior mirrors package** with integrated electric fold-in function which enables drivers to fold in both exterior mirrors (for example in a car wash) and bring them back into position at the touch of a button; incl. automatic parking function on the passenger side.

□ **Interior mirror with automatic anti-glare function.** The dazzle from following vehicles is automatically reduced when the amount of incident light exceeds a defined limit.



□ **High-Beam Assistant** supports the driver at night by automatically switching between high and low beam when there is oncoming traffic or another car ahead, or when the road is sufficiently illuminated.

□ **Rain sensor** with automatic driving lights control: automatically switches on the windscreen wipers when it begins to rain, adjusting the wiper frequency in line with rainfall intensity. The integrated automatic driving lights control will switch on the low beam automatically in the rain, at dusk and in tunnels (standard for Z4 sDrive28i, Z4 sDrive35i, and Z4 sDrive35is).



■ **Side indicators** with Z4-specific design.



■ **Retractable hardtop**, opens quickly and automatically – at the touch of a button.

□ **Wind deflector**, enables the enjoyment of open-top driving without annoying draughts and turbulences in the head and shoulder area. It can be folded neatly for storage on the parcel shelf.



□ **Lights package** with vicinity lighting in the exterior door handles which provides 20 seconds of illumination after the doors have been unlocked – to ensure safe access in the dark. Also included: parcel shelf illumination, ambient light, reading lights, and footwell lights.



□ **17" light alloy wheels V-spoke style 514** with mixed runflat tyres, 8 J x 17, 225/45 R 17 tyres at the front, 8.5 J x 17, 255/40 R 17 tyres at the rear (standard for Z4 sDrive35i).



■ **17" light alloy wheels Star-spoke style 290** with 8 J x 17, 225/45 R 17 runflat tyres (standard for Z4 sDrive18i, Z4 sDrive20i, and Z4 sDrive28i).



□ **18" light alloy wheels Multi-spoke style 293** with mixed runflat tyres, 8 J x 18, 225/40 R 18 tyres at the front, 8.5 J x 18, 255/35 R 18 tyres at the rear.



□ **18" light alloy wheels V-spoke style 515** with mixed runflat tyres, 8 J x 18, 225/40 R 18 tyres at the front, 8.5 J x 18, 255/35 R 18 tyres at the rear.



■ **18" light alloy wheels Star-spoke style 295** with mixed runflat tyres, 8 J x 18, 225/40 R 18 tyres at the front, 8.5 J x 18, 255/35 R 18 tyres at the rear (exclusively for the Z4 sDrive35is).



□ **18" M light alloy wheels Star-spoke style 325 M<sup>2</sup>** with mixed runflat tyres, 8 J x 18, 225/40 R 18 tyres at the front, 8.5 J x 18, 255/35 R 18 tyres at the rear.



□ **19" M light alloy wheels Double-spoke style 326 M<sup>1,3</sup>** with mixed runflat tyres, 8 J x 19, 225/35 R 19 tyres at the front, 9 J x 19, 255/30 R 19 tyres at the rear.



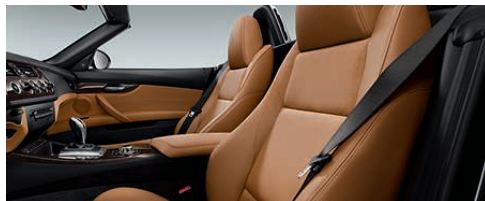
□ **19" light alloy wheels V-spoke style 296<sup>1</sup>** with mixed runflat tyres, 8 J x 19, 225/35 R 19 tyres at the front, 9 J x 19, 255/30 R 19 tyres at the rear.

<sup>1</sup> Wheel/tyre combination for an extremely sporty look with restricted suspension and primary comfort.

<sup>2</sup> Included with the M Sport package, optionally available for the Z4 sDrive35is.

<sup>3</sup> Only available in conjunction with the M Sport package and for the Z4 sDrive35is.

## Standard / Optional equipment.



□ **Sport seats for driver and front passenger** with manual adjustment of fore/aft position, seat height, backrest and seat angle, and thigh support; the electrically adjustable seat sides provide optimal lateral support for every body shape in dynamic driving situations (standard for Z4 sDrive35is).

□ **Lumbar support for driver and passenger seats**, electrically adjustable for height and depth, for an ergonomically perfect seat position and back muscle support.

■ **Armrest, folding**, with large storage compartment.



■ **Standard seats** with fixed integrated headrests and wide range of fore/aft adjustment as well as individually adjustable seat height and backrest angle.

□ **Seat adjustment, electric**, for driver and passenger seats, with two Memory positions for the driver's seat.

□ **Seat heating for driver and passenger** (three settings): seat surface, backrest and sides are heated and quickly radiate comfortable warmth (standard for the Z4 sDrive28i, Z4 sDrive35i and Z4 sDrive35is).



□ **Eight-speed Steptronic sport transmission**, sporty configuration for a superior dynamic driving experience; can also be operated via paddles on the steering wheel (available for the Z4 sDrive18i, Z4 sDrive20i and Z4 sDrive28i).

□ **Seven-speed Steptronic sport transmission with double clutch** for particularly fast gear changes without interruption of power, operated electronically or through the paddles on the leather steering wheel; for optimal dynamism and excellent fuel efficiency (standard for the Z4 sDrive35is, optionally available for the Z4 sDrive35i).



■ **Six-speed manual transmission** for a very sporty drive. Smooth, with perfect ratios and precise, short-throw gearshifts. The tight spacing of gear ratios and the additional sixth gear mean that you can make even more individual use of the engine power provided (not available for the Z4 sDrive35is).



■ **Driving Experience Control** for individual adjustment of drivetrain and chassis components, including the steering, with COMFORT, SPORT, and SPORT+ modes (available in conjunction with Steptronic sport transmission, Adaptive M suspension and M Sport package).

□ **The low-set Adaptive M suspension** with variable damper control allows the driver to choose between comfortable or dynamic suspension settings (standard for the Z4 sDrive35is).



□ **Sport leather steering wheel with gearshift paddles** for even sportier gear changes in conjunction with an Steptronic transmission.



■ **Sport leather steering wheel.** SunReflective Technology ensures that the leather steering wheel rim will not become excessively hot in strong sunlight – ensuring it is always pleasant to the touch.

■ **Multifunction buttons** for operating the telephone, voice and audio functions as well as the cruise control.



□ **M leather steering wheel** including M shift lever knob with M emblem (only in conjunction with six-speed manual transmission).

□ **M leather steering wheel** with paddles for even sportier gear changes in conjunction with a Steptronic transmission (standard for Z4 sDrive35is).

□ **Steering wheel heating** quickly warms up the steering wheel rim at the press of a button – for added comfort in winter.



■ **Radio BMW Professional**, four-channel amplifier, scan function, CD drive, MP3 decoder, automatic volume control, incl. Stereo speaker system with six speakers, two-line display for expanded representation of telephone numbers, names and audio/MP3 titles, direct telephone operation via radio station buttons.

□ **DAB tuner** offers a large selection of digital radio stations; reception in perfect sound quality across the entire broadcast area; supports DAB+.



■ **Air conditioning system**, incl. microfilter, ensures comfortable climatic conditions in the vehicle interior at any time of the year. Manual temperature control and air recirculation, seven-speed blower and knee-level vent.

□ **Automatic air conditioning system** (shown above), incl. Automatic Air Recirculation (AAR) with filter, solar and fogging sensors, fully automatic temperature control (two separate controls for driver and passenger) and special convertible mode.

## Standard / Optional equipment.



- **HiFi loudspeaker system with digital amplifier** (245 Watt), 11 loudspeakers and digital equalizer which perfectly adapt the sound to the cabin environment.
- **HiFi System Professional**, multichannel-enabled, with a 650-Watt digital amplifier and 14 loudspeakers, for a listening experience of unmatched intensity.

- **Navigation System Professional\***, incl. DVD drive, iDrive Controller with direct menu control buttons, functional bookmarks, integrated hard disk for audio files and navigation data, RTTI-compatible, 3D map presentation and folding high-resolution 8.8" display.



- **Comfort telephone interface with extended smartphone integration** for wireless connection of compatible MP3 players and smartphones,<sup>1,2</sup> including hands-free system. The USB interface enables playback of music files stored on the external device.



- **Internet preparation\*<sup>3</sup>** for unrestricted online access when the vehicle is stationary. Any website can be called up on the Control Display by entering the URL using iDrive.



- **TV function** enables the use of the Control Display as a television set when the vehicle is stationary. The system provides access to digital television (DVB-T) channels.



- **Storage areas** include a compartment in the instrument panel (for vehicles without navigation system), a parcel shelf behind the seats and a space under the central armrest, foldable storage areas in the door trims to the left and right, and a storage tray in the luggage compartment.



- **Luggage compartment**, with a handy capacity of 180 litres (hardtop down) or 310 litres (hardtop up) – in the latter case, the boot provides space for a 46" golf bag.



- **Storage compartment package** consisting of two drinks holders under the centre armrest, one foldable compartment on the driver's side, a storage area in the dividing wall between cabin and luggage compartment, one net each in the front passenger footwell area and on the seat backrests, one clothes hook each on the rollover bars, and luggage straps in the boot.



- **Comfort Access system** for opening and locking the vehicle without having to press a button on the vehicle key. In addition, the engine can be started without the need for a key, using the Start/Stop button. Also included: vicinity lighting integrated into the door handles.



- **Through-loading system with integrated transport bag** provides plenty of space for expanding the luggage compartment, including a ski rest for the boot's loading sill. With this option, even larger items such as a second golf bag (46") can be easily accommodated. You will even be able to transport two pairs of skis (max. 170 cm), with the hardtop up or down.



- **BMW Service Inclusive.\*** No more costs for maintenance and wear. A singlepayment covers all BMW Service jobs, including Original BMW Parts. Worldwide from all participating BMW partners. For further details please visit [www.bmw.com/serviceinclusive](http://www.bmw.com/serviceinclusive)



- **BMW Welt.** Taking delivery of a car at BMW Welt ranks among the best moments any driver can have. Come to BMW Welt for a truly unforgettable day, and enjoy a unique programme of activities tailored to your personal preferences. Find out more at [www.bmw-welt.com](http://www.bmw-welt.com)

\* This service may vary by country.

<sup>1</sup> For information on compatible devices see [www.bmw.com/bluetooth](http://www.bmw.com/bluetooth)

<sup>2</sup> Smartphone apps may be used at any time from within the vehicle.

<sup>3</sup> Data flat rate valid for one year; subscription can be extended at any time. May vary by country.

## BMW Z4 CONTRASTING ROOF – PERFECTION.

Express your individual taste perfectly: with the BMW Individual hardtop in non-metallic Black or metallic Glacier Silver. The unmistakable hardtop with its visual contrast will further emphasise the unique character of the BMW Z4. And while Black adds to the car's sporty appearance, the hardtop in metallic Glacier Silver will show off the elegant aspects of the BMW Z4. Whichever paintwork solution you end up selecting – the vivid contrast between hardtop and vehicle colour ensures that the dynamic roadster silhouette is apparent even when the top is up.



BMW Individual hardtop in non-metallic Black.

BMW exterior colours	Alpine White non-metallic	Mineral White metallic	Glacier Silver metallic	Sparkling Brown metallic	Melbourne Red metallic	Valencia Orange metallic	Black non-metallic <sup>1</sup>	Mineral Grey metallic	Deep Sea Blue metallic	Black Sapphire metallic
BMW Individual roof colours	Black non-metallic	Black non-metallic	Black non-metallic	Black non-metallic	Black non-metallic	Black non-metallic	Glacier Silver metallic	Glacier Silver metallic	Glacier Silver metallic	Glacier Silver metallic



The contrasting roof emphasises the car's roadster proportions.

<sup>1</sup> Not available in conjunction with M Sport package.

## Original BMW Accessories\*.



19" light alloy wheels, Star-spoke style 276, click-on rear-mounted carrier system for bicycles/e-bikes.



Cup holder attaches to the centre console and safely accommodates containers of up to one litre.



All-weather foot mats and aluminium pedal pads.



Ornamental front grille in Black underlines the sporty looks of the BMW Z4.

A BMW always delivers a special drive – and Original BMW Accessories make the experience better still. Combining great ideas, immaculate design and sheer practicality to create innovative solutions, Original BMW Accessories are available in many categories: exterior, interior, communications & information and transport & luggage compartment solutions. Your BMW Service Partner will be pleased to advise you on the complete range of Original BMW Accessories and provide you with a special catalogue. For further information, please visit

[www.bmw.com/accessories](http://www.bmw.com/accessories)

\* May not be available in all countries. Please consult your BMW partner.



		Z4 sDrive18i	Z4 sDrive20i	Z4 sDrive28i	Z4 sDrive35i	Z4 sDrive35is <sup>1</sup>
--	--	--------------	--------------	--------------	--------------	----------------------------

**Weight**

Unladen EU <sup>2</sup>	kg	1470 [1495]	1470 [1495]	1475 [1495]	1580 [1600]	[1600]
Max. permissible	kg	1725 [1750]	1725 [1750]	1730 [1750]	1835 [1855]	[1855]
Permitted load	kg	330	330	330	330	330
Permitted axle load front/rear	kg	795/975	800/970	800/970	870/1000	870/1000

**Engine<sup>3, 6</sup>**

Cylinders/valves		4/4	4/4	4/4	6/4	6/4
Capacity	cc	1997	1997	1997	2979	2979
Stroke/bore	mm	90.1/84.0	90.1/84.0	90.1/84.0	89.6/84.0	89.6/84.0
Output/engine speed	kW/rpm	115/5000	135/5000–6250	180/5000–6500	225/5800–6250	250/5900
	(hp/rpm)	156/5000	184/5000–6250	245/5000–6500	306/5800–6250	340/5900
Max. torque/engine speed	Nm/rpm	240/1250–4400	270/1250–4500	350/1250–4800	400/1300–5000	450/1500–4500
Compression ratio	:1	10.0	10.0	10.0	10.2	10.2

**Transmission**

Standard transmission ratios						
	I/II/III:1	3.68/2.06/1.31	3.68/2.06/1.31	3.68/2.06/1.31	4.06/2.40/1.58	4.78/3.06/2.15
	IV/V/VI:1	1.0/0.81/0.68	1.0/0.81/0.68	1.0/0.81/0.68	1.19/1.0/0.87	1.68/1.39/1.20
	VII/VIII/R:1	–/–/3.35	–/–/3.35	–/–/3.35	–/–/3.68	1.0/–/4.45
Final drive ratio	:1	3.73	3.73	3.08	3.08	2.56

**Performance**

Top speed	km/h	221 [220]	235 [232]	250 <sup>2</sup> [250 <sup>2</sup> ]	250 <sup>2</sup> [250 <sup>2</sup> ]	[250 <sup>2</sup> ]
Acceleration 0–100km/h	sec	7.9 [8.1]	6.9 [6.9]	5.7 [5.5]	5.2 [5.1]	[4.8]

**Fuel consumption<sup>3, 6</sup>**

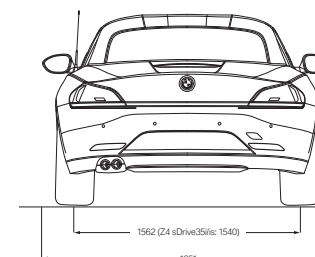
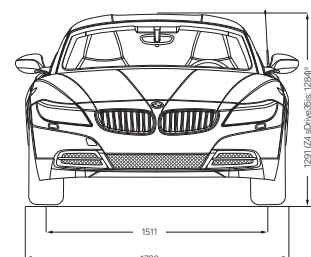
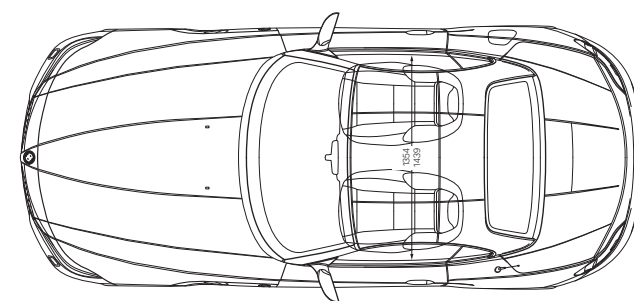
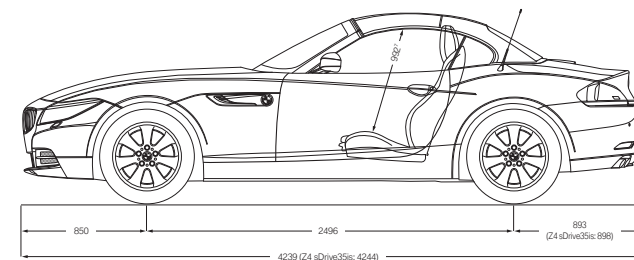
Urban	l/100km	8.9 [9.4]	8.9 [9.4]	9.1 [9.4]	13.4 [12.9]	[12.9]
Extra-urban	l/100km	5.6 [5.3]	5.6 [5.3]	5.5 [5.3]	7.1 [6.8]	[6.8]
Combined	l/100km	6.8 [6.8]	6.8 [6.8]	6.8 [6.8]	9.4 [9.1]	[9.1]
CO <sub>2</sub> emissions	g/km	159 [159]	159 [159]	159 [159]	219 [211]	[211]
Tank capacity, approx.	l	55	55	55	55	55

**Wheels**

Tyre dimensions	front	225/45 R 17 W	225/45 R 17 W	225/45 R 17 W	225/45 R 17 W	225/40 R 18 W
	rear	225/45 R 17 W	225/45 R 17 W	225/45 R 17 W	255/40 R 17 W	255/35 R 18 W
Wheel dimensions		8 J x 17	8 J x 17	8 J x 17	8/8.5 J x 17	8/8.5 J x 18
Material		Light alloy	Light alloy	Light alloy	Light alloy	Light alloy

**Electrical system**

Battery capacity	Ah	70	70	70	70	70
Alternator output	A	170	170	170	170	170
	W	2380	2380	2380	2380	2380



All dimensions in millimetres. Luggage compartment volume 180 litres (hardtop down) to 310 litres (hardtop up).

<sup>1</sup> Seven-speed Steptronic sport transmission with double clutch included as standard.

<sup>2</sup> The figure quoted includes a 90 per cent tank filling, 68kg for the driver and 7kg for luggage. Unladen weight applies to vehicles with standard equipment. Optional equipment may increase this figure.

<sup>3</sup> The BMW Z4 engines are designed for RON 95 fuel. They may be run on lower fuel grades down to RON 91, with a decrease in power. Engines may also be run on unleaded fuel (minimum RON 91) with a maximum ethanol content of 10% (E10). Output and fuel consumption figures apply to RON 98 fuel.

<sup>4</sup> Short-term peak torque with overboost function: 270Nm (Z4 sDrive18i) or 500Nm (Z4 sDrive35is).

<sup>5</sup> Electronically limited.

<sup>6</sup> All engines comply with the EU6 emissions standard. Fuel consumption is determined in accordance with the ECE driving cycle made up of approximately one-third urban traffic and two-thirds extra-urban driving (based on the distance covered). CO<sub>2</sub> emissions are measured in addition to fuel consumption. Optional equipment can increase these figures. For further information on fuel consumption and CO<sub>2</sub> emissions please contact your BMW partner.

<sup>7</sup> Maximum headroom.

<sup>8</sup> Maximum height when opening the hardtop: 1,800mm.

Values in [ ] apply to vehicles with Steptronic transmission.

## WELL TAKEN CARE OF WITH BMW SERVICES:

When you buy a BMW, you can look forward to superb service and comprehensive customer care. For example, the **Condition Based Service** independently tracks both service fluid levels and the condition of parts subject to wear and then notifies you in the display when the vehicle requires servicing. So you only need to go to your BMW service partner when it's really necessary. When you do go, our **qualified**

**BMW service specialists** take care of your vehicle using the newest workshop technology and only **original BMW parts**. This service is available worldwide in more than 3,300 BMW service partner establishments in over 150 countries, to provide you with limitless driving pleasure.

### BMW SERVICE.



**BMW Service Inclusive\*:** BMW Service Inclusive enables you to enjoy unlimited driving pleasure in your new BMW. You can select different coverage packages and various contract durations. Costs for maintenance, inspection and wear are covered for the entire duration of the contract. Of course, only Original BMW Parts will be used for any repairs. BMW Service Inclusive is not just effective in your country, but worldwide, at all participating BMW Service partners. For further information visit

[www.bmw.com/serviceinclusive](http://www.bmw.com/serviceinclusive)



**BMW Mobile Service\*:** This service is there for you in case of a breakdown, day and night. Specially trained BMW technicians do everything necessary, on the phone or on-site, to get your car back on the road as fast as possible. We offer a comprehensive country-specific mobility package for breakdowns and insurance that covers you in the event of an accident or theft. And in case of an accident, call us at the BMW accident hotline! We'll take care of calling the police, an ambulance, a tow truck, a replacement car, notifying your insurance company and much more. For more information visit [www.bmw.com](http://www.bmw.com)



**BMW TeleServices\*:** With Condition Based Service, you'll be automatically notified in the display of your next necessary service appointment. Provided you've consented, the most important vehicle data required for analysis will be relayed to BMW automatically. Your assigned BMW service partner will access the information and contact you free of charge to make a service appointment – if one is necessary. To access BMW TeleServices, the vehicle must be equipped with the optional Intelligent Emergency Call or ConnectedDrive Services. If necessary, the service can be deactivated at any time. For more on this topic please visit [www.bmw.com/teleservices](http://www.bmw.com/teleservices)

### BMW FINANCIAL SERVICE.



**BMW Financial Services:** Tailor-made finance: BMW Financial Services offers you attractive leasing, finance and insurance packages. For further information visit [www.bmwfs.com](http://www.bmwfs.com) or ask your local BMW partner to make you an individual offer.

### THE BMW EXPERIENCE.



**BMW TV\*:** [www.bmw.tv](http://www.bmw.tv) enables you to experience the BMW brand in all its diversity. Features, portraits and background reports provide you with information on automobiles, innovations, sports and lifestyle topics.



**BMW Driving Experience:** The better you control your BMW, the more enjoyment you will derive from driving it. Use our training courses to learn for yourself what it means to reach a car's physical limits on various types of surfaces, and what you have to do to control your vehicle even in extreme situations. For further information please visit [www.bmwdrivingexperience.com](http://www.bmwdrivingexperience.com)



**BMW Welt:** A visit to BMW Welt is something you will never forget, whether you go to pick up a new car or just to enjoy the fascination of the brand. To collect a new vehicle, you can choose between three options: Premium Compact, Premium or Premium Plus. To enjoy BMW Welt online, simply visit [www.bmw-welt.com/en](http://www.bmw-welt.com/en)



**BMW Magazine:** In BMW Magazine, experience the newest BMW models in front of stunning backdrops. Discover new design trends, travel destinations and the richness of modern life. Encounter people with visionary ideas who are changing the world. Find out more at [www.bmw.com/magazine](http://www.bmw.com/magazine)

\* May not be available in all countries. Please consult your BMW partner.

## SHAPING THE FUTURE – RESPONSIBLY.



In 2013, the BMW Group was once again listed in the Dow Jones Sustainability World and Europe Indices and thus ranked one of the most sustainable automotive companies worldwide. The development of efficient vehicle concepts and eco-friendly production processes, up to and including recycling, is an integral part of our engineering philosophy. BMW EfficientDynamics standards have enabled us to cut the CO<sub>2</sub> emissions of our fleet of new vehicles in Europe by more than 30% between 1995 and today. We're also aiming to reduce the amount of resources such as water and energy used in production by 45% between 2006 and 2020. Production at our engine plant in Steyr has been waste-water free since 2007. And of course each of our vehicles is designed for easy and economical recycling after its long running life. Please contact your BMW partner on all matters regarding your end-of-life vehicle. For further information please visit our website.

[www.bmw.com/EfficientDynamics](http://www.bmw.com/EfficientDynamics)  
[www.bmwgroup.com/responsibility](http://www.bmwgroup.com/responsibility)  
[www.bmw.com/recycling](http://www.bmw.com/recycling)

More about BMW



Sheer  
Driving Pleasure

[www.bmw.com](http://www.bmw.com)

The models illustrated in this brochure show the specifications and configurations (standard and optional equipment) of vehicles produced by BMW AG for the German market. According to the specific requirements of other markets, alterations in standard and optional equipment and the configurations available for the different models, as described in this brochure, may occur. For more precise information about country-specific vehicle versions, please contact your local BMW partner. Subject to change in design and equipment.

© BMW AG, Munich/Germany. Not to be reproduced wholly or in part without written permission of BMW AG, Munich.

4 11 003 036201 2015 BB. Printed in Germany 2015.



BMW recommends  
**Original BMW Quality Oil.**